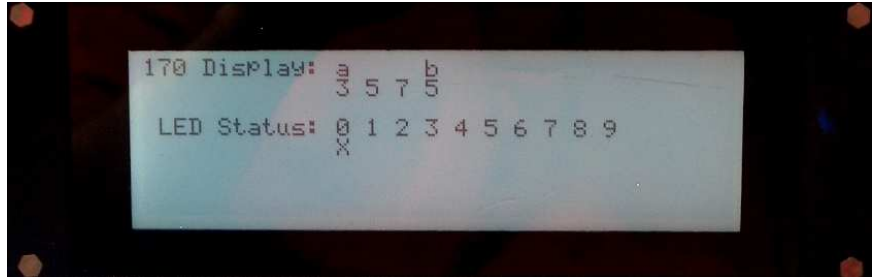
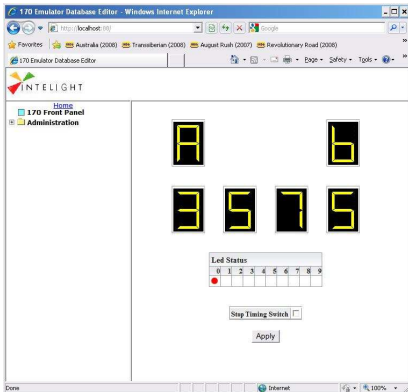


170 Emulator Software

For Advanced Transportation Controllers (ATC)

Part of the Intelight Complete Traffic Framework



Allows existing 170 Applications Software to run on newer ATC hardware

- Fully Emulates 170 hardware
- 170 binary applications software runs without change
- Provides all the features of regular 170 hardware:
 - Front panel display, LEDs, serial support
- Tested with popular 170 software

Supported on the following hardware

- 2070L w/ 1C ATC cpu
- Intelight 170 Smart Card ATC in existing 170E chassis

Supports enhancing 170 software without changing the existing code:

- Add user friendly graphical interfaces:
 - Web User interface, 2070 Menu driven interface
- Ethernet, serial support
- Built in NTCIP support
- NTCIP implementation for specific 170 Software
- Serial ITS cabinet support

